

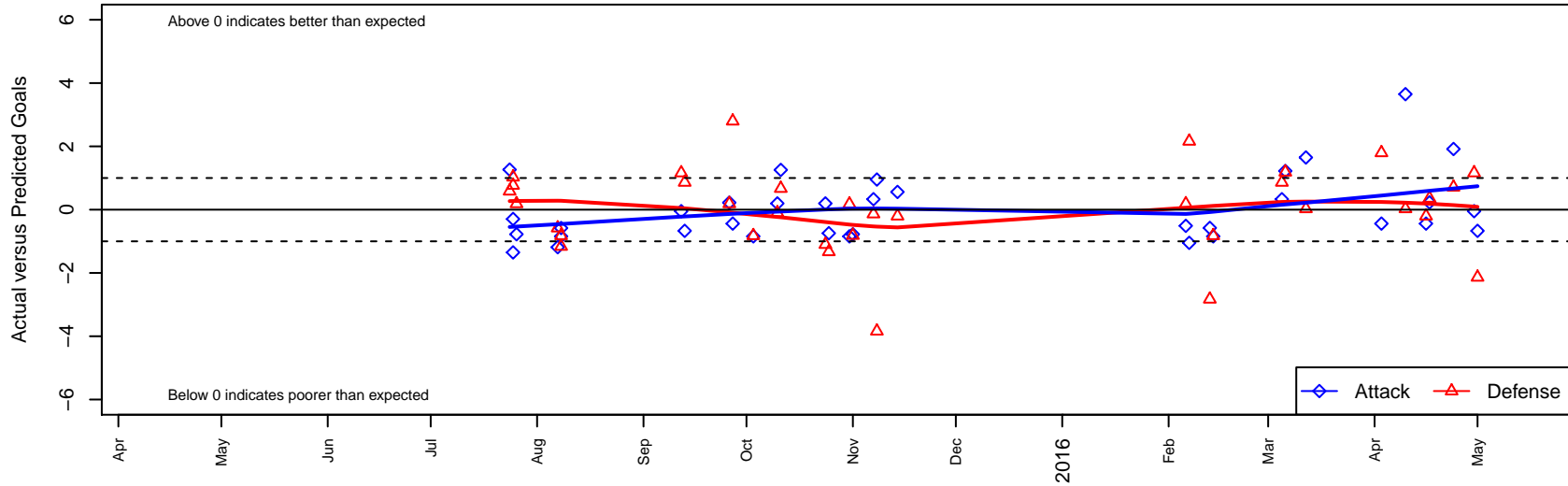
Bend FC Timbers Red G01

Bend FC
 Bend, OR
 G01 total strength=1393
 attack=8.68 defense=7
 fall league = PTT G01 Premier Gold
 spr league = Spr OYS G01 Premier Red

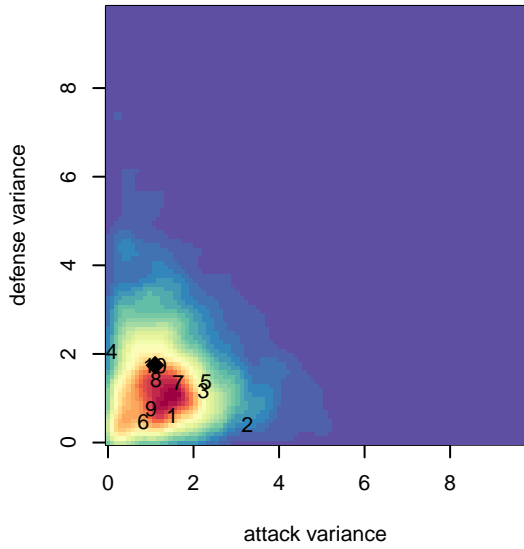
alt names used:
 BEND FC TIMBERS RED U12G (OR)

Venues played:
 2015 Oswego Nike Cup Gold U14
 2015 Bend Premier Cup U14G GOLD U14
 2015 PTT G01 Premier Gold
 2015 Spr OYS G01 Premier Red
 2015 OYS State Cup G01

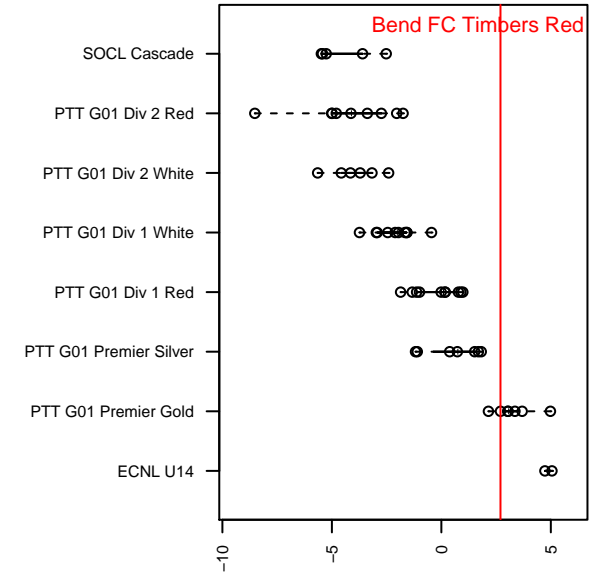
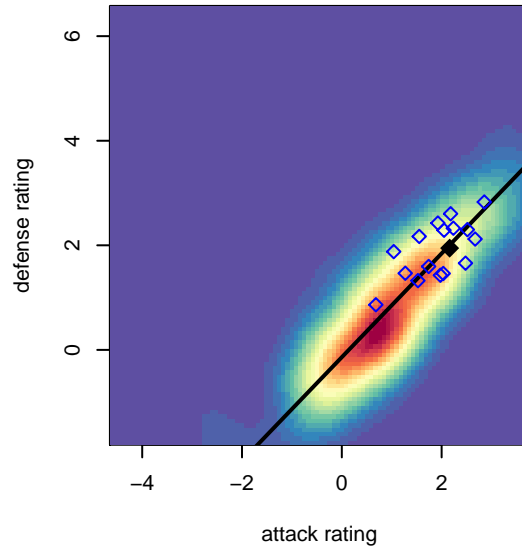
Bend FC Timbers Red G01
 Dots are actual minus expected GF (blue circles) and GA (red triangles).
 Blue line is smoothed change in attack strength. Red is smoothed change in defense strength.



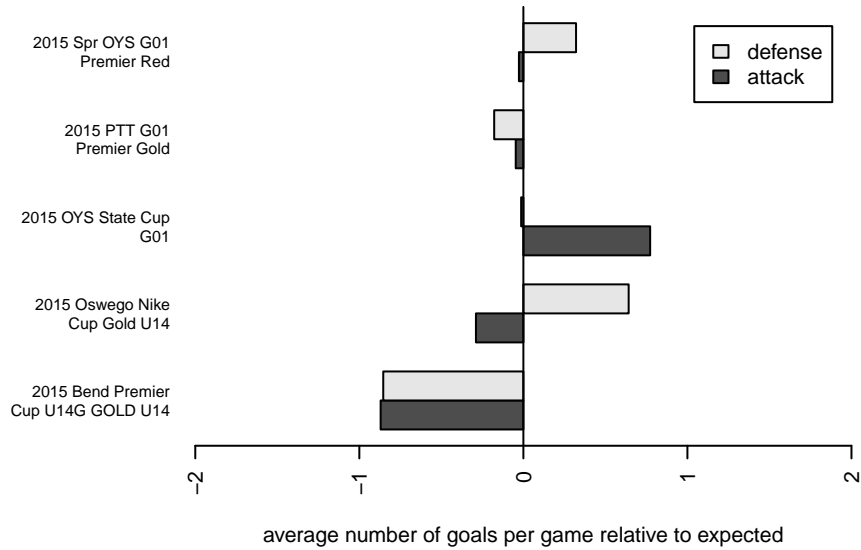
**attack and defense variance (black dot)
relative to other teams
and top 10 in region**



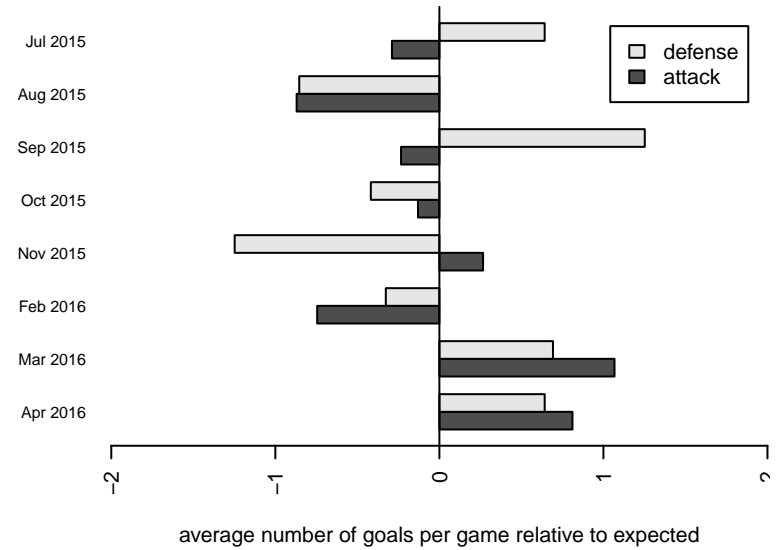
**attack and defense rating
relative to others at age
and all opponents in last 13 months**



Performance relative to 13 month average



Performance relative to 13 month average



| date | home | | away | | venue | pred.home | pred.away |
|------------|-------------------------------------|---|-------------------------------------|---|------------------------------|-----------|-----------|
| 2016-05-01 | Bend FC Timbers Red G01 | 0 | Crossfire OR WUSC Levante White G01 | 3 | 2015 OYS State Cup G01 | 0.67 | 0.86 |
| 2016-04-30 | Eastside Timbers Red G01 | 1 | Bend FC Timbers Red G01 | 1 | 2015 OYS State Cup G01 | 2.16 | 1.05 |
| 2016-04-24 | Bend FC Timbers Red G01 | 4 | NEU Barcelona White G01 | 0 | 2015 OYS State Cup G01 | 2.08 | 0.71 |
| 2016-04-17 | Crossfire OR SSC Storm G01 | 0 | Bend FC Timbers Red G01 | 3 | 2015 OYS State Cup G01 | 0.36 | 2.77 |
| 2016-04-16 | Capital FC Timbers Red G01 | 3 | Bend FC Timbers Red G01 | 0 | 2015 OYS State Cup G01 | 2.80 | 0.44 |
| 2016-04-10 | Bend FC Timbers Red G01 | 5 | Irish United G01 | 1 | 2015 OYS State Cup G01 | 1.35 | 1.03 |
| 2016-04-03 | Capital FC Timbers Red G01 | 1 | Bend FC Timbers Red G01 | 0 | 2015 Spr OYS G01 Premier Red | 2.80 | 0.44 |
| 2016-03-12 | Bend FC Timbers Red G01 | 3 | Irish United G01 | 1 | 2015 Spr OYS G01 Premier Red | 1.35 | 1.03 |
| 2016-03-06 | Bend FC Timbers Red G01 | 2 | ETFC Cypress Black G01 | 0 | 2015 Spr OYS G01 Premier Red | 0.78 | 1.19 |
| 2016-03-05 | Bend FC Timbers Red G01 | 1 | Crossfire OR WUSC Levante White G01 | 0 | 2015 Spr OYS G01 Premier Red | 0.67 | 0.86 |
| 2016-02-14 | Rogue Valley Timbers Red G01 | 2 | Bend FC Timbers Red G01 | 0 | 2015 Spr OYS G01 Premier Red | 1.18 | 0.84 |
| 2016-02-13 | Bend FC Timbers Red G01 | 1 | CSC Storm G01 | 4 | 2015 Spr OYS G01 Premier Red | 1.58 | 1.17 |
| 2016-02-07 | Eastside Timbers Red G01 | 0 | Bend FC Timbers Red G01 | 0 | 2015 Spr OYS G01 Premier Red | 2.16 | 1.05 |
| 2016-02-06 | FC Portland ECNL Reserves G01 | 1 | Bend FC Timbers Red G01 | 0 | 2015 Spr OYS G01 Premier Red | 1.18 | 0.51 |
| 2015-11-14 | Capital FC Timbers Red G01 | 3 | Bend FC Timbers Red G01 | 1 | 2015 PTT G01 Premier Gold | 2.80 | 0.44 |
| 2015-11-08 | Bend FC Timbers Red G01 | 2 | Eastside Timbers Red G01 | 6 | 2015 PTT G01 Premier Gold | 1.05 | 2.16 |
| 2015-11-07 | Bend FC Timbers Red G01 | 1 | Crossfire OR WUSC Levante White G01 | 1 | 2015 PTT G01 Premier Gold | 0.67 | 0.86 |
| 2015-11-01 | ETFC Cypress Black G01 | 2 | Bend FC Timbers Red G01 | 0 | 2015 PTT G01 Premier Gold | 1.19 | 0.78 |
| 2015-10-31 | Rogue Valley Timbers Red G01 | 1 | Bend FC Timbers Red G01 | 0 | 2015 PTT G01 Premier Gold | 1.18 | 0.84 |
| 2015-10-25 | Washington Timbers Red G01 | 3 | Bend FC Timbers Red G01 | 0 | 2015 PTT G01 Premier Gold | 1.67 | 0.74 |
| 2015-10-24 | THUSC United Mercury Reserves G01 | 2 | Bend FC Timbers Red G01 | 1 | 2015 PTT G01 Premier Gold | 0.90 | 0.80 |
| 2015-10-11 | Bend FC Timbers Red G01 | 2 | Washington Timbers Red G01 | 1 | 2015 PTT G01 Premier Gold | 0.74 | 1.67 |
| 2015-10-10 | Bend FC Timbers Red G01 | 1 | THUSC United Mercury Reserves G01 | 1 | 2015 PTT G01 Premier Gold | 0.80 | 0.90 |
| 2015-10-03 | Bend FC Timbers Red G01 | 0 | Rogue Valley Timbers Red G01 | 2 | 2015 PTT G01 Premier Gold | 0.84 | 1.18 |
| 2015-09-27 | Bend FC Timbers Red G01 | 0 | Capital FC Timbers Red G01 | 0 | 2015 PTT G01 Premier Gold | 0.44 | 2.80 |
| 2015-09-26 | Bend FC Timbers Red G01 | 1 | ETFC Cypress Black G01 | 1 | 2015 PTT G01 Premier Gold | 0.78 | 1.19 |
| 2015-09-13 | Crossfire OR WUSC Levante White G01 | 0 | Bend FC Timbers Red G01 | 0 | 2015 PTT G01 Premier Gold | 0.86 | 0.67 |
| 2015-09-12 | Eastside Timbers Red G01 | 1 | Bend FC Timbers Red G01 | 1 | 2015 PTT G01 Premier Gold | 2.16 | 1.05 |

| date | home | | away | | venue | pred.home | pred.away |
|-------------|------------------------------|---|--------------------------------------|---|-------------------------------------|------------------|------------------|
| 2015-08-08 | Rogue Valley Timbers Red G01 | 2 | Bend FC Timbers Red G01 | 0 | 2015 Bend Premier Cup U14G GOLD U14 | 1.18 | 0.84 |
| 2015-08-08 | IR Academy Magic G01 | 2 | Bend FC Timbers Red G01 | 1 | 2015 Bend Premier Cup U14G GOLD U14 | 0.84 | 1.58 |
| 2015-08-07 | Rocklin YSC Heat G01 | 1 | Bend FC Timbers Red G01 | 0 | 2015 Bend Premier Cup U14G GOLD U14 | 0.42 | 1.19 |
| 2015-07-26 | ETFC Cypress Black G01 | 1 | Bend FC Timbers Red G01 | 0 | 2015 Oswego Nike Cup Gold U14 | 1.19 | 0.78 |
| 2015-07-25 | Bend FC Timbers Red G01 | 0 | Irish United G01 | 0 | 2015 Oswego Nike Cup Gold U14 | 1.35 | 1.03 |
| 2015-07-25 | PSPL Surf Academy G02 | 1 | Bend FC Timbers Red G01 | 1 | 2015 Oswego Nike Cup Gold U14 | 1.77 | 1.29 |
| 2015-07-24 | Bend FC Timbers Red G01 | 3 | Crossfire OR CUSC Red Power Rays G01 | 0 | 2015 Oswego Nike Cup Gold U14 | 1.73 | 0.58 |